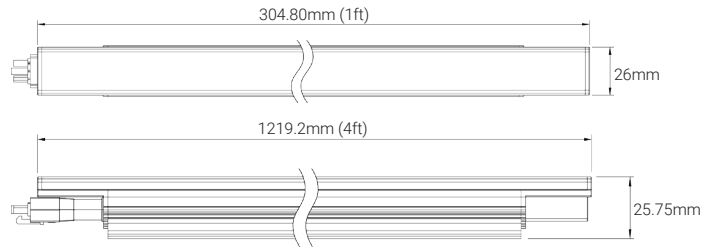
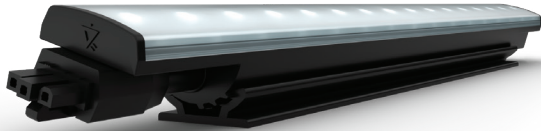
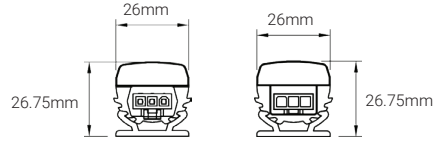


PROJECT: \_\_\_\_\_ TYPE: \_\_\_\_\_ QUANTITY: \_\_\_\_\_



CCT	18K, 22K, 27K, 3K, 35K, 4K, 6K, 65K
CRI	UP TO 98
Control	ELV
Optical Distribution	120°x150°
Operating Temperature	-4°F ~ 122°F (-20°C ~ 50°C)
Power Factor	≥ 0.9
SDCM	3- Step MacAdam Ellipse
Dimensions	L: 1ft (304.9mm), 4ft (1219.2mm) W: 1 1/32" (26mm) H: 1 1/64" (25 mm)
Applications	Cove and Indirect General Illumination
Voltage	120V AC/ 240V AC 60Hz
Warranty	5 Years

Standard Output	400 - 500 lm/ 1ft	3.2W/ 1ft
Standard Output	1600 - 2000 lm/ 4ft	13W/ 4ft

WHITE LIGHT



FIXTURE RUN LENGTHS

Max Run Length	120'
----------------	------

ACCESSORIES

- Leader Cable 3 Pin 10ft (3m)
- Jumper Cable 3 Pin 1ft (0.3m)
- Jumper Cable 3 Pin 4ft (1m)
- Terminator 3 Pin
- Mounting Track

STANDARDS & CERTIFICATIONS



Tested to UL & CSA by Intertek For Use in USA & CANADA.

PROJECT: \_\_\_\_\_ TYPE: \_\_\_\_\_ QUANTITY: \_\_\_\_\_

ORDER CODE

MODEL	INPUT VOLTAGE	WATTAGE	FUNCTION	CONTROL	OPTICS	LENGTH	FINISH	APPLICATION							
<b>PBC</b>				<b>ELV</b>			<b>B</b>	<b>IN</b>							
PARIAH BORING COVE	120V AC PBC 240V AC	120 240	STANDARD OUTPUT HIGH OUTPUT	SO HO	1800K 2200K 2700K 3000K 3500K 4000K 6000K 6500K	18 22 27 3 35 4 6 65	ELV ELV	120°x150° CUSTOM	150 CS	1ft 4ft	1 4	BLACK	B	INTERIOR	IN